

Certifications

IEC 61914:2015

Section

Strap clamps and hanging device

Application

Field



PRODUCT BENEFITS

Anti treatment UV and flame retardant flame strap
Protective liner to avoid the contact between the aluminium support and the cables

TOOL CAPACITY

Material Aluminium alloy
AS7G06 + Stainless steel

Fixing By 2 screws or studs
M12

Fixing centers 250 mm / 0.943 in

TOOL DIMENSIONS

Length 280 mm

Width 100 mm

Height 260 mm

Weight without box 2 Kg

Packaging None

ALROC SAS

Z.I. de la Fonderie - 72160 TUFFE
FRANCE

Phone: +33 2 43 71 11 80

Fax number : +33 2 43 71 16 51

www.alroc.fr

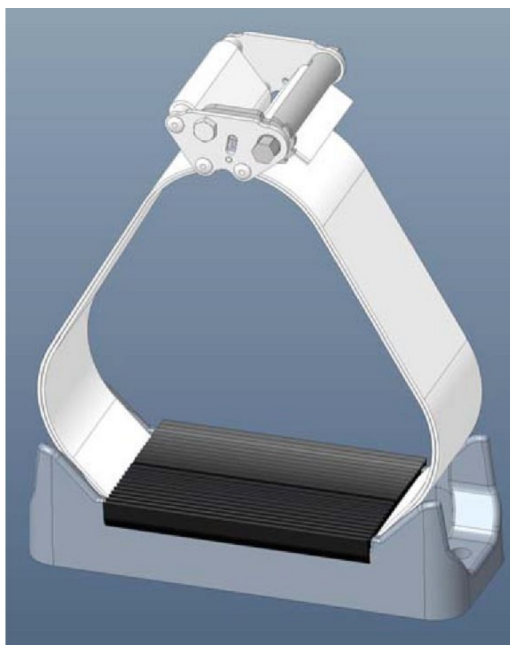
Universal Shoe

TO DO WHAT

The universal ALROC clamps are designed to hold 3 cables in trefoil configuration and to ease the cables setup during their tightening.

Designed to be fastened directly on the floor or on metallic frames.

Tightening the strap ratchet
Fast implementation of the cleats



Associated tool

MALT-SCS - Earthing device for aluminium shoe (plate + brass cable clamp 120 mm²)

115/V080 - M12x45 screw, stainless steel

115/V095 - M12x60 screw, stainless steel

115/R050 - M12 Washer, stainless steel

115/E033 - M12 Nuts, stainless steel

Certification IEC 61914 :

ICC Peak 100 kA, S = 81mm, D = 1m

Lateral Load : 500 daN

Use temperature : -60°C to 120°C

Cleats, saddles and accessories

SCS-70-85



| Part Number | Diameter | Tool capacity | | | Dimensions | | | Packaging |
|-------------|----------------------------------|--|-----------------------------|-------------------|---------------------|--------------------|---------------------|-----------|
| | | Material | Fixing | Fixing centers | Length | Width | Height | |
| SCS-105-125 | 105 - 125 mm 4,134 - 4,921 in | Aluminium alloy AS7G06 + Stainless steel | By 2 screws or studs M12 | 250 mm / 0.943 in | 280 mm 11,024 in | 100 mm 3,937 in | 335 mm 13,189 in | none |
| SCS-70-85 | 70 - 85 mm 2,756 - 3,346 in | Aluminium alloy AS7G06 + Stainless steel | By 2 screws or studs M12 | 250 mm / 0.943 in | 280 mm 11,024 in | 100 mm 3,937 in | 260 mm 10,236 in | none |
| SCS-85-105 | 85 - 105 mm 3,346 - 4,134 in | Aluminium alloy AS7G06 + Stainless steel | By 2 screws or studs M12 | 250 mm / 0.943 in | 280 mm 11,024 in | 100 mm 3,937 in | 300 mm 11,811 in | none |