

MV cables Tools

MTL3/33



Section

MV Accessories

Application

Field
Laboratory
Production



PRODUCT BENEFITS

High speed steel blade

TOOL CAPACITY

Diameter 26 - 52 mm
1,024 - 2,047 inch

Cutting depth 3.3 mm / 0,129 in

TOOL DIMENSIONS

Length 23 mm

Width 23 mm

Height 11 mm

Weight without box 0,006 Kg

Packaging Plastic Box

ALROC SAS

Z.I. de la Fonderie - 72160 TUFFE
FRANCE
Phone: +33 2 43 71 11 80
Fax number : +33 2 43 71 16 51
www.alroc.fr

Longitudinal cutting wheel 3.3 mm / 0,129 in

TO DO WHAT

The MTL3/33 is a longitudinal cutting wheel.

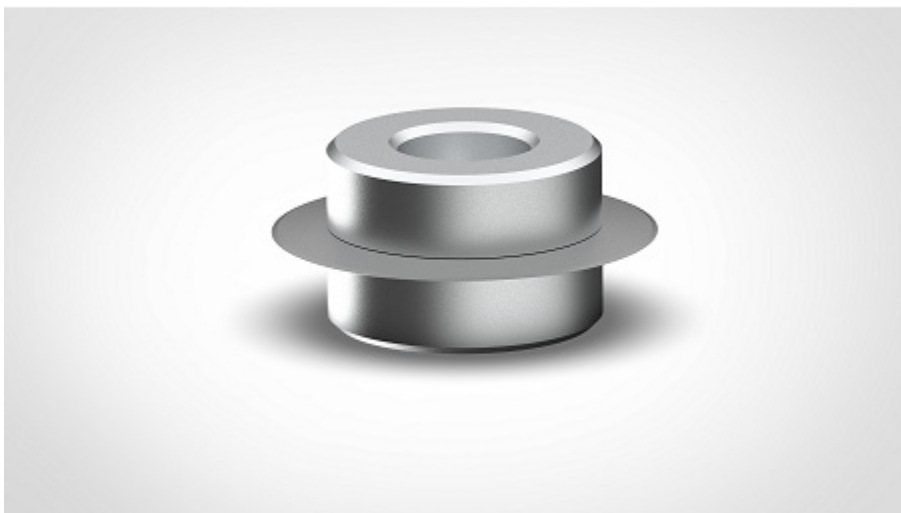
It adapts to pliers of the PG3 types, in order to be able to change the longitudinal cutting depth according to the thickness of the cable sheath.

This MTL has an easily identifiable cutting depth of 3.3 mm (0,129 in) thanks to the markings inscribed on it.

All cutting depths are available on request from 0.5 to 5 mm.(0.0197 to 0.197 in)

Reference info: MTL3/ **

** = Cutting depth (e.g MTL3/35 -> Cutting depth 3.5 mm / 0,137 in)



MV cables Tools

MTL3/33



Part Number	Diameter	Tool capacity	Dimensions			Packaging
		Cutting depth	Length	Width	Height	
MTL3/33	26 - 52 mm 1,024 - 2,047 in	3.3 mm / 0,129 in	23 mm 0,906 in	23 mm 0,906 in	11 mm 0,433 in	plastic box